


Albertville Band Scales

SOPRANO CLARINET

C



Musical staff for C major scale in 4/4 time. The scale is written in treble clef with a key signature of one flat (Bb). The melody consists of eighth notes in the right hand and quarter notes in the left hand. The scale is: C4-D4-E4-F4-G4-A4-Bb4-C5.

F



Musical staff for F major scale in 4/4 time. The scale is written in treble clef with a key signature of one flat (Bb). The melody consists of eighth notes in the right hand and quarter notes in the left hand. The scale is: F4-G4-A4-Bb4-C5-D5-E5-F5.

Bb



Musical staff for Bb major scale in 4/4 time. The scale is written in treble clef with a key signature of two flats (Bb, Eb). The melody consists of eighth notes in the right hand and quarter notes in the left hand. The scale is: Bb4-C5-D5-E5-F5-G5-A5-Bb6.

Eb



Musical staff for Eb major scale in 4/4 time. The scale is written in treble clef with a key signature of three flats (Bb, Eb, Ab). The melody consists of eighth notes in the right hand and quarter notes in the left hand. The scale is: Eb4-F4-G4-A4-Bb4-C5-D5-E5-F5.

Ab




Musical staff for Ab major scale in 4/4 time. The scale is written in treble clef with a key signature of four flats (Bb, Eb, Ab, Db). The melody consists of eighth notes in the right hand and quarter notes in the left hand. The scale is: Ab4-Bb4-C5-D5-E5-F5-G5.

Db



Musical staff for Db major scale in 4/4 time. The scale is written in treble clef with a key signature of five flats (Bb, Eb, Ab, Db, Gb). The melody consists of eighth notes in the right hand and quarter notes in the left hand. The scale is: Db4-Eb4-F4-G4-A4-Bb4-C5.

Gb



Musical staff for Gb major scale in 4/4 time. The scale is written in treble clef with a key signature of six flats (Bb, Eb, Ab, Db, Gb, Cb). The melody consists of eighth notes in the right hand and quarter notes in the left hand. The scale is: Gb4-Ab4-Bb4-C5-D5-E5-F5.

G



Musical staff for G major scale in 4/4 time. The scale is written in treble clef with a key signature of one sharp (F#). The melody consists of eighth notes in the right hand and quarter notes in the left hand. The scale is: G4-A4-B4-C5-D5-E5-F#5.

D



Musical staff for D major scale in 4/4 time. The scale is written in treble clef with a key signature of two sharps (F#, C#). The melody consists of eighth notes in the right hand and quarter notes in the left hand. The scale is: D4-E4-F#4-G4-A4-B4-C#5.

A



Musical staff for A major scale in 4/4 time. The scale is written in treble clef with a key signature of three sharps (F#, C#, G#). The melody consists of eighth notes in the right hand and quarter notes in the left hand. The scale is: A4-B4-C#5-D5-E5-F#5-G#5.

E

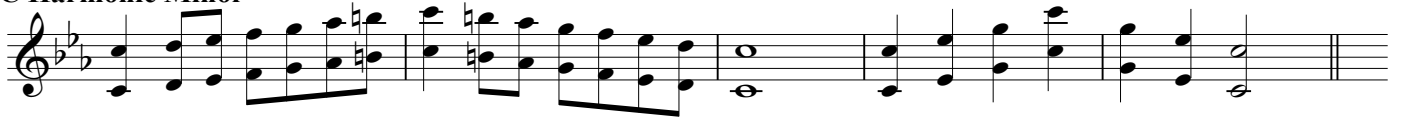


Musical staff for E major scale in 4/4 time. The scale is written in treble clef with a key signature of four sharps (F#, C#, G#, D#). The melody consists of eighth notes in the right hand and quarter notes in the left hand. The scale is: E4-F#4-G#4-A4-B4-C#5.

B



Musical staff for B major scale in 4/4 time. The scale is written in treble clef with a key signature of five sharps (F#, C#, G#, D#, A#). The melody consists of eighth notes in the right hand and quarter notes in the left hand. The scale is: B4-C#5-D#5-E5-F#5-G#5.

C Harmonic Minor**A Melodic Minor****Chromatic**