


# Albertville Band Scales


## FLUTE/PICCOLO

C



Musical staff for C major scale in 4/4 time. The scale is written in treble clef with a key signature of one flat (Bb). The melody consists of eighth notes in the first two measures, followed by quarter notes in the third and fourth measures. The notes are C4, D4, E4, F4, G4, A4, B4, C5, B4, A4, G4, F4, E4, D4, C4.

F



Musical staff for F major scale in 4/4 time. The scale is written in treble clef with a key signature of two flats (Bb, Eb). The melody consists of eighth notes in the first two measures, followed by quarter notes in the third and fourth measures. The notes are F4, G4, A4, Bb4, C5, D5, Eb5, F5, Eb5, D5, C5, Bb4, A4, G4, F4.

Bb



Musical staff for Bb major scale in 4/4 time. The scale is written in treble clef with a key signature of three flats (Bb, Eb, Ab). The melody consists of eighth notes in the first two measures, followed by quarter notes in the third and fourth measures. The notes are Bb4, C5, D5, Eb5, F5, G5, Ab5, Bb5, Ab5, G5, F5, Eb5, D5, C5, Bb4.

Eb



Musical staff for Eb major scale in 4/4 time. The scale is written in treble clef with a key signature of three flats (Bb, Eb, Ab). The melody consists of eighth notes in the first two measures, followed by quarter notes in the third and fourth measures. The notes are Eb4, F4, G4, Ab4, Bb4, C5, D5, Eb5, Bb4, Ab4, G4, F4, Eb4.

Ab



Musical staff for Ab major scale in 4/4 time. The scale is written in treble clef with a key signature of four flats (Bb, Eb, Ab, Db). The melody consists of eighth notes in the first two measures, followed by quarter notes in the third and fourth measures. The notes are Ab4, Bb4, C5, Db5, Eb5, F5, G5, Ab5, Ab5, G5, F5, Eb5, D5, C5, Ab4.

Db



Musical staff for Db major scale in 4/4 time. The scale is written in treble clef with a key signature of four flats (Bb, Eb, Ab, Db). The melody consists of eighth notes in the first two measures, followed by quarter notes in the third and fourth measures. The notes are Db4, Eb4, F4, G4, Ab4, Bb4, C5, Db5, Eb5, Db4, Bb4, Ab4, G4, F4, Db4.

Gb



Musical staff for Gb major scale in 4/4 time. The scale is written in treble clef with a key signature of five flats (Bb, Eb, Ab, Db, Gb). The melody consists of eighth notes in the first two measures, followed by quarter notes in the third and fourth measures. The notes are Gb4, Ab4, Bb4, C5, Db5, Eb5, F5, Gb5, Ab5, Gb4, Eb4, Db4, C5, Bb4, Gb4.

G




Musical staff for G major scale in 4/4 time. The scale is written in treble clef with a key signature of one sharp (F#). The melody consists of eighth notes in the first two measures, followed by quarter notes in the third and fourth measures. The notes are G4, A4, B4, C5, D5, E5, F#5, G5, F#5, E5, D5, C5, B4, A4, G4.

D



Musical staff for D major scale in 4/4 time. The scale is written in treble clef with a key signature of two sharps (F#, C#). The melody consists of eighth notes in the first two measures, followed by quarter notes in the third and fourth measures. The notes are D4, E4, F#4, G4, A4, B4, C#5, D5, C#5, B4, A4, G4, F#4, E4, D4.

A



Musical staff for A major scale in 4/4 time. The scale is written in treble clef with a key signature of three sharps (F#, C#, G#). The melody consists of eighth notes in the first two measures, followed by quarter notes in the third and fourth measures. The notes are A4, B4, C#5, D5, E5, F#5, G#5, A5, G#5, F#5, E5, D5, C#5, B4, A4.

E



Musical staff for E major scale in 4/4 time. The scale is written in treble clef with a key signature of four sharps (F#, C#, G#, D#). The melody consists of eighth notes in the first two measures, followed by quarter notes in the third and fourth measures. The notes are E4, F#4, G#4, A4, B4, C#5, D#5, E5, D#5, C#5, B4, A4, G#4, F#4, E4.

B

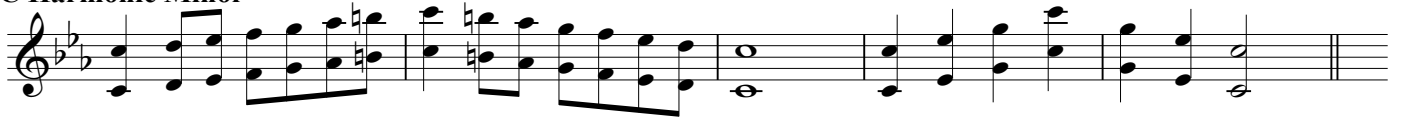


Musical staff for B major scale in 4/4 time. The scale is written in treble clef with a key signature of five sharps (F#, C#, G#, D#, A#). The melody consists of eighth notes in the first two measures, followed by quarter notes in the third and fourth measures. The notes are B4, C#5, D#5, E5, F#5, G#5, A#5, B5, A#5, G#5, F#5, E5, D#5, C#5, B4.

B



Musical staff for B major scale in 4/4 time. The scale is written in treble clef with a key signature of five sharps (F#, C#, G#, D#, A#). The melody consists of eighth notes in the first two measures, followed by quarter notes in the third and fourth measures. The notes are B4, C#5, D#5, E5, F#5, G#5, A#5, B5, A#5, G#5, F#5, E5, D#5, C#5, B4.

**C Harmonic Minor****A Melodic Minor****Chromatic (FLUTE)****Chromatic (PICCOLO)**